

DATE: 28 October 2019
SUBJECT: Airway W37 Waypoint Issue
Impacted: A350 / A380 Customers Flying in Northern China
Cycles: 1912 – Effective Date 7 November 2019

SUMMARY

A change to one airway (W37) in AIRAC cycle 1911 has highlighted a software issue in A380/A350 FMS leading to repetitive resets during flight if the flight plan has a specific portion of the airway.

Honeywell is tailoring the airway to remove waypoint URDUR for impacted operators in cycle 1912.

Dear Valued Customer,

Purpose:

The intent of this notice is to make A380/A350 operators aware of a possible FMS software reset when Airway W37 (North China) is part of any FMS flight plan (active or secondary) since AIRAC cycle 1911.

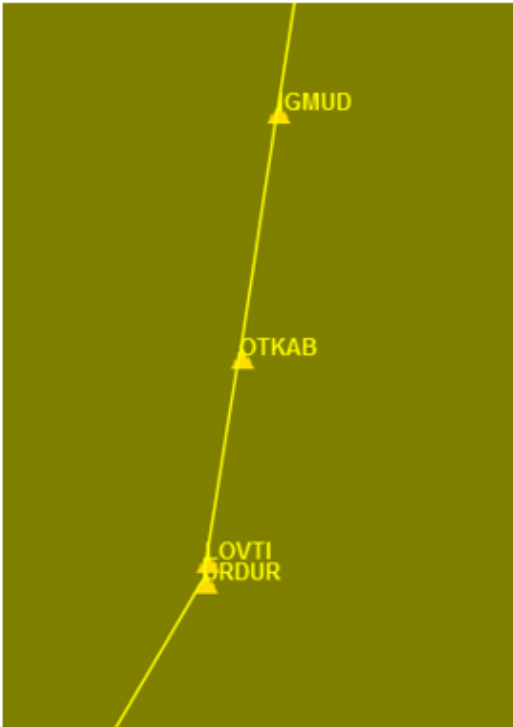
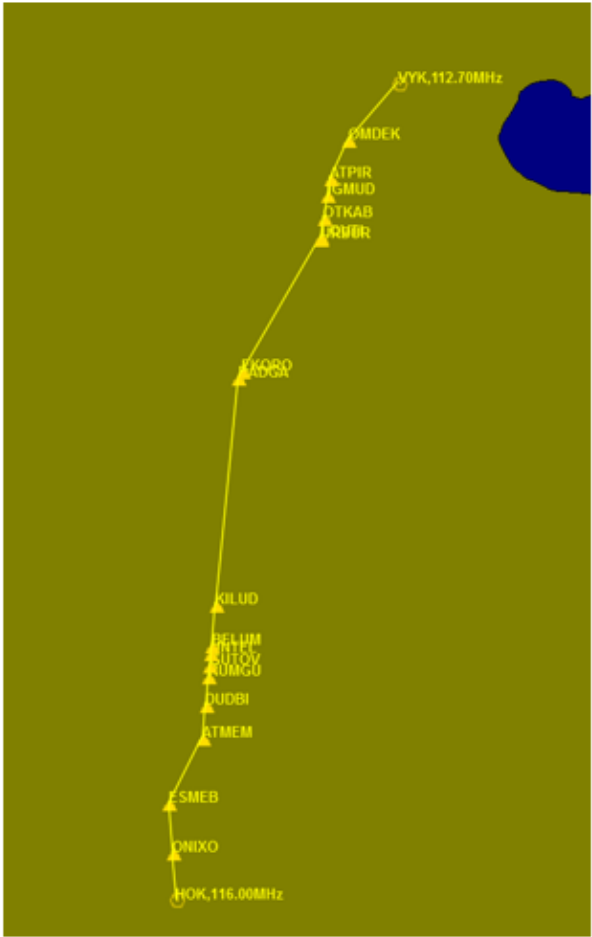
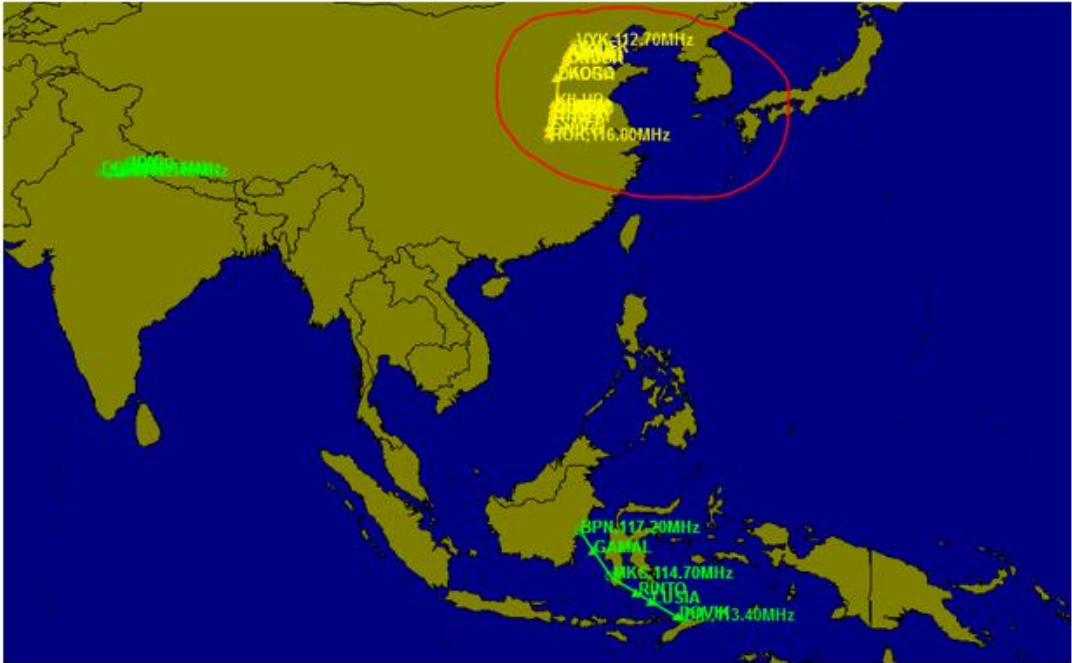
Honeywell will implement a Navigation database modification which removes waypoint URDUR in Airway W37 to prevent occurrence of this reset.

Effectivity:

Applicable to all airlines operating A380 and A350 aircrafts in North China with Airway W37 in a flight plan.

Problem Description and Analysis:

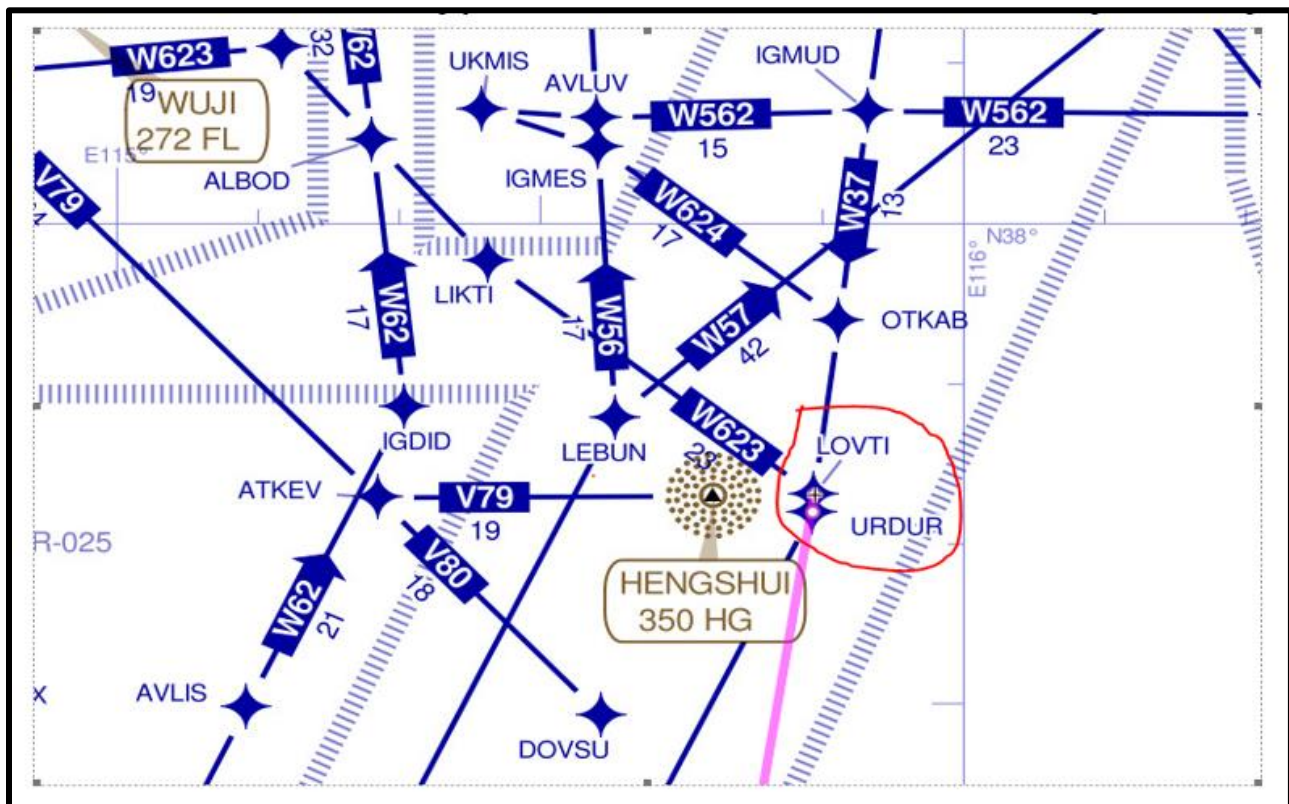
Honeywell received reports about repetitive FMS resets from A380 and A350 operators. Honeywell has identified the root cause of the issue which is triggered by a specific configuration of waypoints in Airway W37. The problem started to appear after several waypoints were added to Airway W37 that were very close in proximity to each other (distance from LOVTI to URDUR is 1.06 NM). Please see below.



Airway ID	R	Fix	Type	Latitude	Longitude	RNP	CTR	Atc Compulsory	IsOceanic
Filter	Filter	Filter	Filter	Filter	Filter	Filter	Filter	Filter	Filter
W37	B	BNP	NAV	S01-14-44.46	E116-56-25.31			Y	N
W37	B	GAMAL	WPT	S02-51-49.47	E118-02-20.39			Y	N
W37	B	MKS	NAV	S05-02-16.12	E119-31-34.27			Y	N
W37	B	RINTO	WPT	S06-19-12.59	E121-40-57.27			Y	N
W37	B	LUSIA	WPT	S07-02-17.68	E122-53-32.34			Y	N
W37	B	DOVIK	WPT	S08-20-12.94	E125-09-44.67			Y	N
W37	B	DIL	NAV	S08-32-38.15	E125-31-39.81			Y	N
W37	B	*DIS*1							
W37	2	HOK	NAV	N31-19-30.01	E114-25-48.04			Y	N
W37	2	ONIXO	WPT	N31-46-42.03	E114-23-41.97			Y	N
W37	2	ESMEB	WPT	N32-15-24.03	E114-21-30.03			Y	N
W37	2	ATMEM	WPT	N32-53-05.99	E114-41-00.02			Y	N
W37	2	DUDBI	WPT	N33-12-24.01	E114-42-53.96			Y	N
W37	2	RUMGL	WPT	N33-28-54.02	E114-44-29.98			Y	N
W37	2	GUTOV	WPT	N33-35-29.99	E114-45-12.00			Y	N
W37	2	UNTEL	WPT	N33-42-11.99	E114-45-48.00			Y	N
W37	2	BELUM	WPT	N33-46-47.99	E114-46-17.97			Y	N
W37	2	KILUD	WPT	N34-10-17.99	E114-48-36.02			Y	N
W37	2	DADGA	WPT	N36-21-23.96	E115-01-42.01			Y	N
W37	2	EKORC	WPT	N36-25-18.02	E115-04-00.00			Y	N
W37	2	URDUR	WPT	N37-42-00.00	E115-49-18.01			Y	N
W37	2	LOVTI	WPT	N37-43-06.02	E115-49-24.03			Y	N
W37	2	OTKAB	WPT	N37-54-00.00	E115-51-12.03			Y	N
W37	2	IGMUD	WPT	N38-07-00.00	E115-53-11.99			Y	N
W37	2	ATPIR	WPT	N38-16-54.00	E115-54-48.01			Y	N
W37	2	OMDEK	WPT	N38-39-18.03	E116-05-30.02			Y	N
W37	2	VYK	NAV	N39-11-41.97	E116-34-17.97			Y	N
W37	2	*DIS*4							
W37	B	SI	NDB	N60-41-27.71	W046-35-49.93			Y	N
W37	B	NA	NDB	N61-10-14.66	W045-24-46.63			Y	N
W37	B	*DIS*5							
W37	B	ROKOT	WPT	N60-50-44.97	E030-42-22.97				N
W37	B	VIDLA	WPT	N61-12-00.02	E032-23-51.01			Y	N
W37	B	GITOS	WPT	N61-52-36.03	E032-44-08.97			Y	N
W37	B	BEGUR	WPT	N62-07-17.96	E032-51-45.04			Y	N

Addition of waypoints in
AIRAC cycle 1911 in W37

Waypoints Added in W37 for Cycle 1911



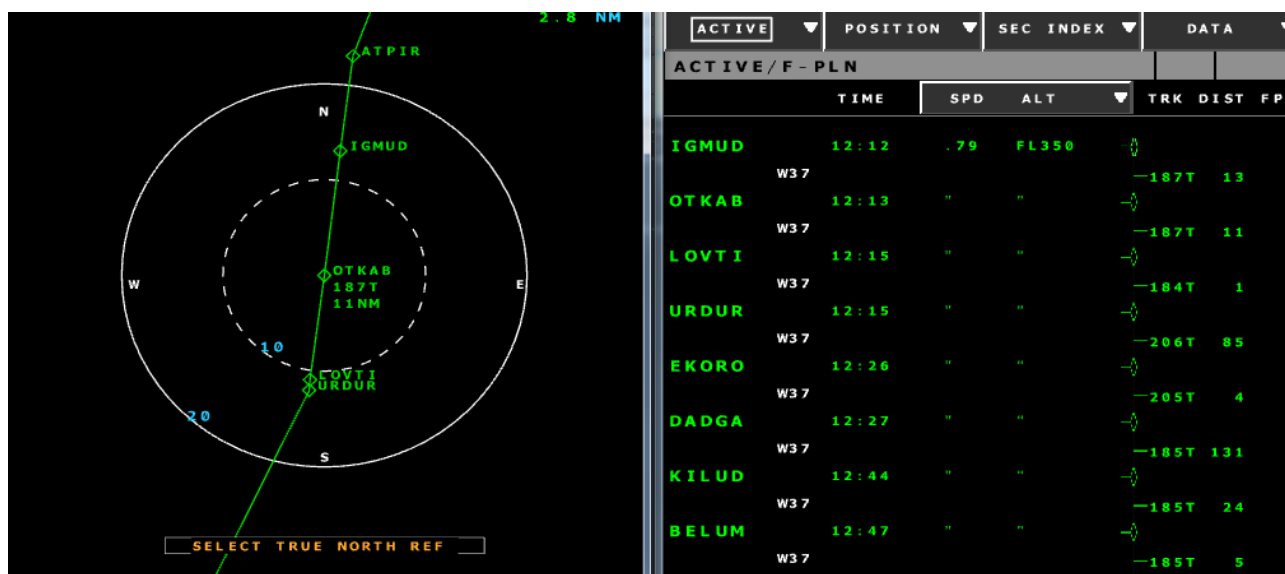
LOVTI = Intersection of Several Airways

Solution/Action:

Honeywell has determined the root cause and successfully tested a solution for the software.

The next release of A380/A350 FMS standard will fix this issue. Development of this software is on-going and certification is not expected before end of 2020 (Subject to change. Contact Airbus for schedule updates).

Interim solution is required: **Honeywell will remove waypoint URDUR from Airway W37 starting in cycle 1912.**



Before Airway W37 Change



After Airway W37 Change

Follow Up:

If you are an operator impacted by this change and wish to discuss this issue further, please contact Aviation.Services@Honeywell.com.

Thank you,

Aviation Services

Account Services:

Email : dsa@honeywell.com

Phone : (602) 436-6737 ; ATR - Option 1

NavDB Production:

Email : Aviation.Services@honeywell.com

For the latest Notice to Airman (NOTAM's) regarding your NavDB service, please visit:

<https://ads.honeywell.com>, NavDB, Flight Info, Alert/Notices.

For 24-Hour/7-Day technical support, please contact Honeywell Technical Operations at 1-855-808-6500 (U.S. and Canada) or 1-602-365-6500 (Int'l), use Option 1, or Email AeroTechSupport@Honeywell.com.